

AUTOMATIC TRANSFER SWITCH MODULE – SMART-XFR

FEATURES

Microcontroller based design
Operation by 3 push buttons
Easy to fit DIN standard 72x72 panel mount housing
Connection is via locking plug and socket connectors
Relay outputs
Front panel leds for status indication
Automatic switching between Utility and Genset
Optional handheld tool to access all timers, set points and parameters

ACTUAL SIZE



DESCRIPTION

Smart-XFR is an automatic transfer switch controller between Utility and Genset with two modes of operation: Normal and Test Genset.

OPERATION

Normal Mode: On start-up, the module enters this mode and remains in it until the **Test G** push button is pressed. In this mode, the module monitors the Utility supply. When the Utility fails, the module counts a response delay **rSP** before starting the Genset. When the Genset runs, it engages the load after the elapse of the warm-up delay **UuP**. When the Utility is re-established, the power is switched back with a dead transfer time **tdt** after a restoration delay **Urd** and the Genset is shut down after the elapse of the cooling time **coL**. If the Genset fails, the load is disengaged immediately but the start signal remains engaged until the Utility is reestablished.

Test Genset Mode: the module enters this mode when the Test G push button is pressed and exits it when the Test G push button is pressed again. In this mode, the module starts the Genset regardless of the status of the Utility. If the Genset fails in this mode, the start signal is held. If the Utility was feeding the load before entering this mode, the Utility will continue feeding the load until the Genset finishes warming up.

FRONT PANEL LEDS

Test G Led: This red led turns on when the module is operating in the Test Genset Mode.

Utility Led: This red Led turns on when the Utility is present.

Genset Led: This red Led turns on when Genset is established. When counting the response delay and cranking, this led blinks 250ms on, 250ms off. When the Genset fails, this led blinks 250ms on, 2s off.

Utility Contactor Led: This green Led turns on when the Utility is feeding the load and its contactor is engaged.

Genset Contactor Led: This green Led turns on when the Genset is feeding the load and its contactor is engaged.

ABSOLUTE MAXIMUM RATINGS

Supply voltage	30Vdc
AC voltage	280vac
Outputs	16A 250V
Operating temperature	-30 to 70°C

SPECIFICATION

Operating voltage	8 to 28vdc
Utility Undervoltage	150vac
Genset Undervoltage	150vac
Outputs	10A 250V
Dimensions (WidthxHghtxDpeth)	72x72x32 mm

MENU DESCRIPTION

This menu can only be accessed using the SMART-ST/X

rSP	Response delay
UuP	Warm up delay
coL	Cooling delay
Urd	Utility Restoration Delay
tdt	Transfer Dead Time
LFS	Load Factory Settings



S. & A. S. LTD

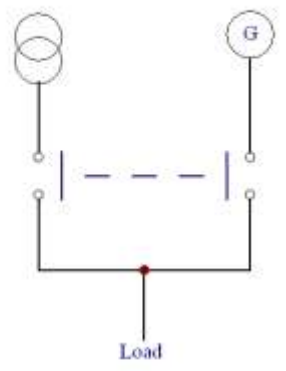
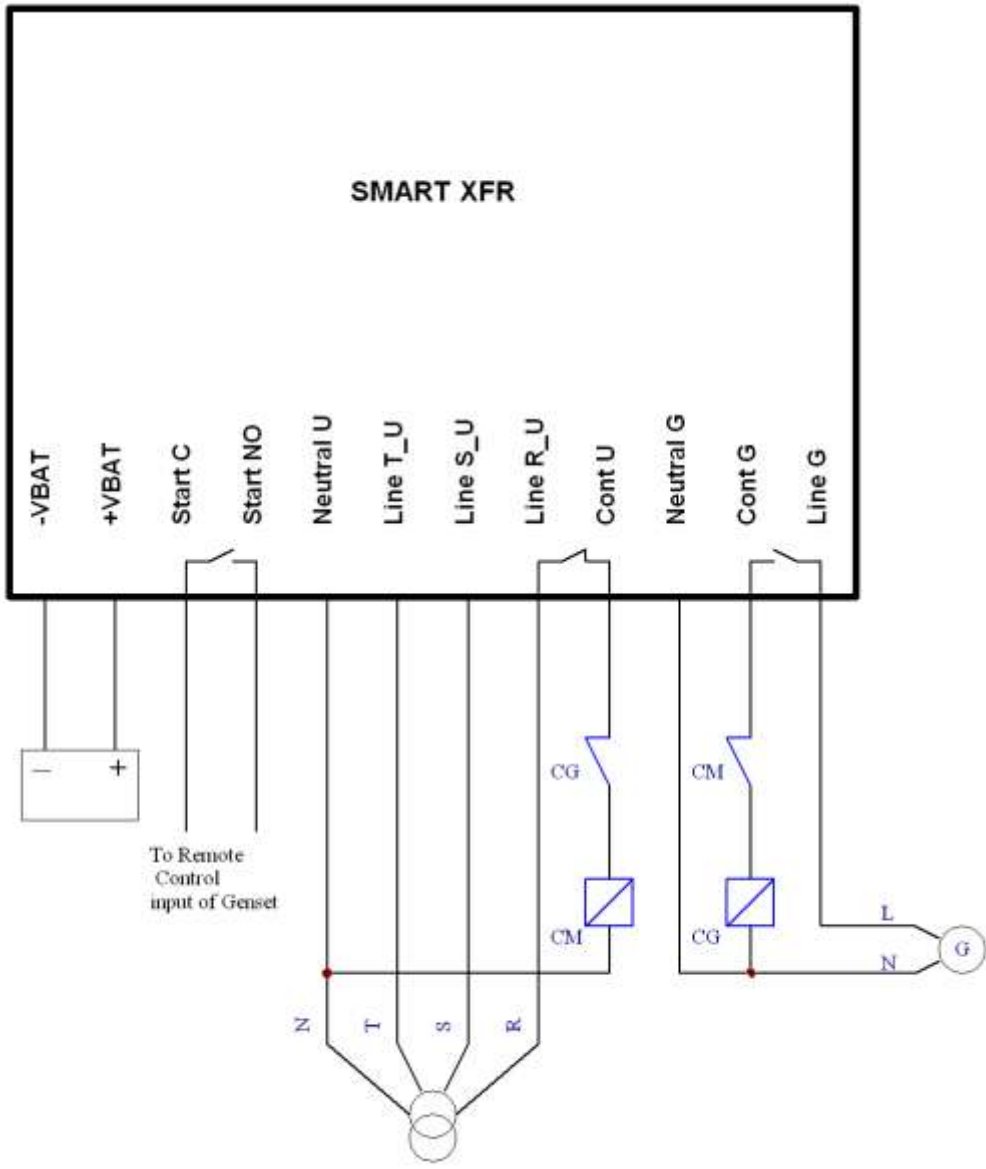
Beirut Office:
Boutros Building 1st Basement
Cheikh-el-Ghabi Street
Ghabi Beirut 2068 7808
Lebanon
Tel: +961 1 216 994
Fax:+961 1 339 600

Headquarters & Factory:
S. & A. S. Building
Seaside Road
Jieh Chouf
Lebanon
Tel: +961 7 996 333
Fax:+961 7 996 116

Website:
www.sascontrollers.com

Technical Support & Email:
Tel: +961 71 996 333
support@sascontrollers.com

INSTALLATION



Beirut Office:
 Boutros Building 1st Basement
 Cheikh-el-Ghabi Street
 Ghabi Beirut 2068 7808
 Lebanon
 Tel: +961 1 216 994
 Fax: +961 1 339 600

Headquarters & Factory:
 S. & A. S. Building
 Seaside Road
 Jieh Chouf
 Lebanon
 Tel: +961 7 996 333
 Fax: +961 7 996 116

Website:
www.sascontrollers.com

Technical Support & Email:
 Tel: +961 71 996 333
support@sascontrollers.com